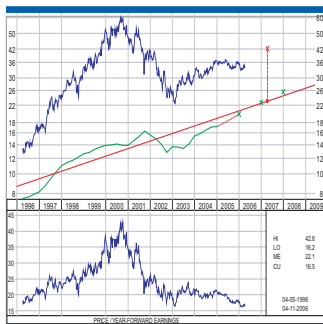


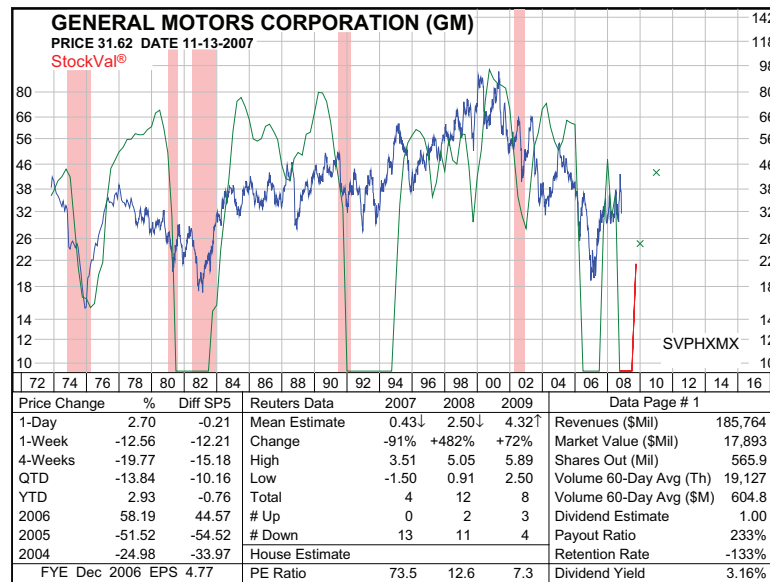
Incorporating Economic Data into the Valuation Process



ABOUT STOCKVAL

Since 1985, StockVal has offered comprehensive equity analysis and portfolio management tools to the investment management community through distinctive software and database products.

StockVal includes an extensive economic database that can easily be included into reports and graphical analysis routines. There are several ways to use economic data within StockVal.



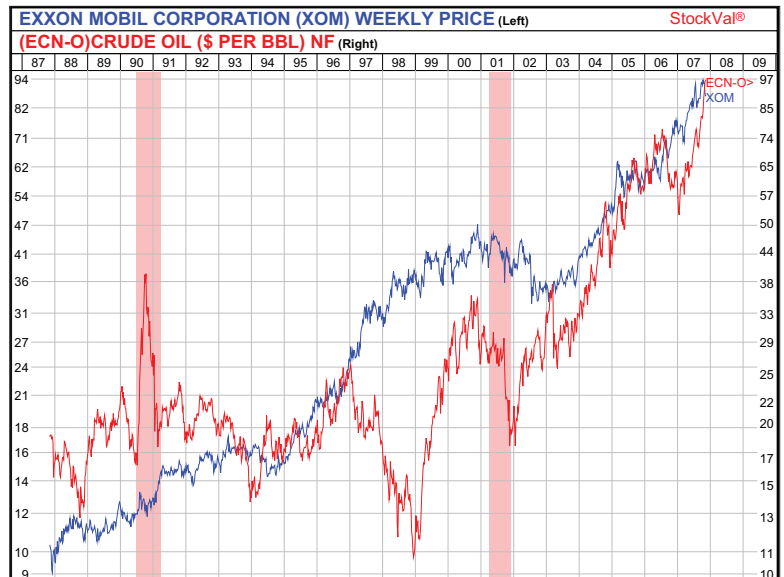
Recessionary Shading

Highlight economic cycles and view performance during such times.

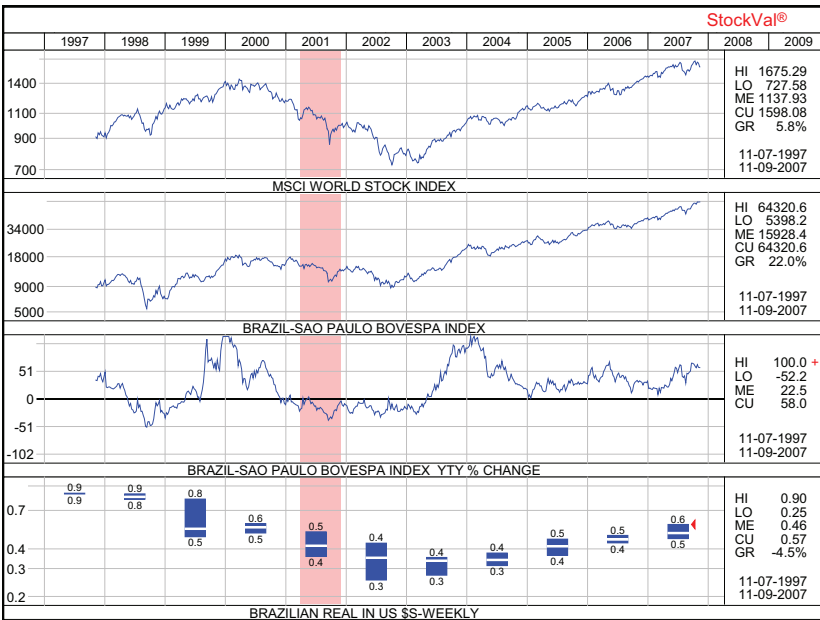
Visual Correlation

Overlay stock performance with commodity prices.

Analyze raw data or time period changes.



QUICKTAKE - NOVEMBER 2007
 INCORPORATING ECONOMIC DATA INTO THE VALUATION PROCESS

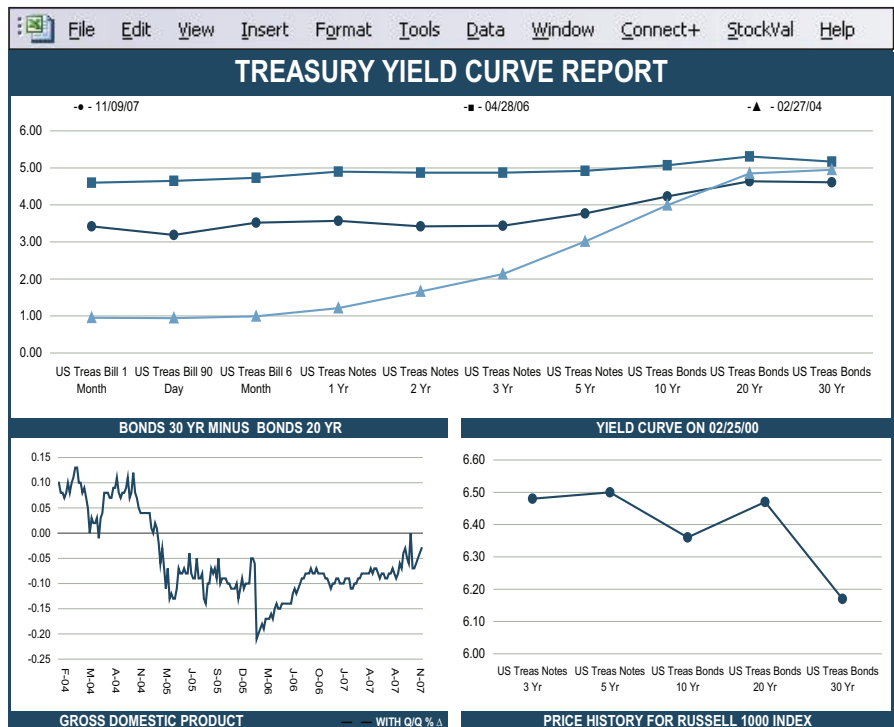


Gain Perspective

View several economic factors to analyze growth of world markets or Country Specific Indices and currencies.

Excel Spreadsheets

StockVal also includes an Excel Add-in that allows downloading of economic data along with a collection of custom templates that can be customized and are great for reports.



For more information, contact StockVal at 800-637-8625

© Reuters 2007. All rights reserved. Reuters, StockVal, and the Sphere logo are the trademarks of the Reuters group of companies around the world. Reuters, by publishing this document, does not guarantee that any information will ensure correct and faultless operation of the relevant service or equipment. Reuters, its agents and employees shall not be held liable to or through any user for any loss or damage whatsoever resulting from reliance on the information contained herein. Except as permitted by law, no part of this document may be reproduced or transmitted by any process or means without the prior consent of Reuters. Microsoft, Windows, and Microsoft Excel are the registered trademarks of Microsoft Corporation in the United States and/or other countries. All other trademarks are the property of their respective owners. 9/2002.